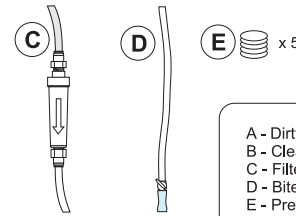
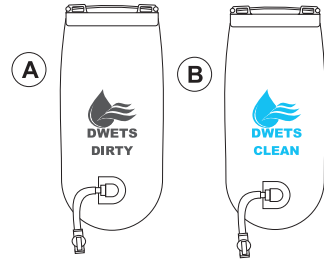


INSTRUCTION MANUAL



GRAVITY BAG

1 IN BAG



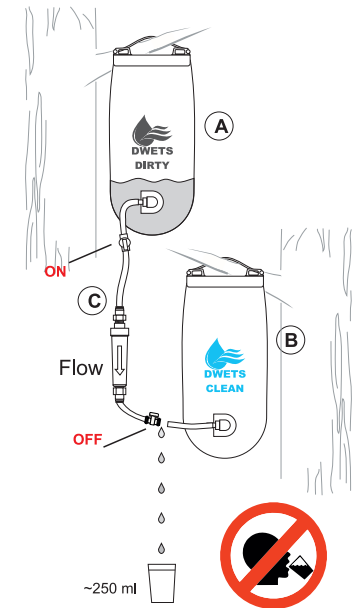
- A - Dirty Reservoir with Valve
- B - Clean Reservoir with Valve
- C - Filter
- D - Bite Valve
- E - Prefilter

2 BEFORE USE

BEFORE FIRST USE:

Before the first use the filter must be soaked and saturated in water thoroughly and flushed. To do this, simply turn valve closest to the dirty reservoir bag on when the valve closest to the clean water reservoir bag is turned off. Filter is completely saturated when you notice no air bubbles rising through the lines. At this time disconnect the hose from the quick-connect on/off valve closest to the clean water reservoir and allow 250ml of water to flow through. Once the filter has been flushed, reattach the clean reservoir bag to the filter, and you are ready to go.

3 BEFORE USE



4 INSTRUCTION

STEP 1

Remove easy zip opening and ensure the shut off clamp is in the "closed" position. Fill dirty reservoir bag with a maximum of 2.5l of water and securely close the dirty reservoir bag with the easy zip feature.

STEP 2

Securely attach the filter cartridge to the dirty reservoir bag and clean reservoir bag in the correct flow direction.

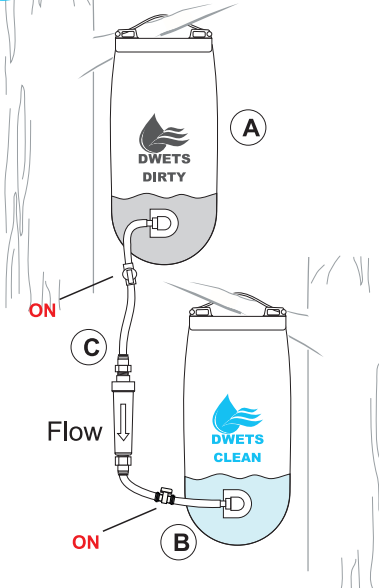
STEP 3

Securely attach the dirty reservoir bag to a tree, or object that will ensure the bag is at the highest elevation above the clean reservoir bag as possible without putting tension on the hoses.

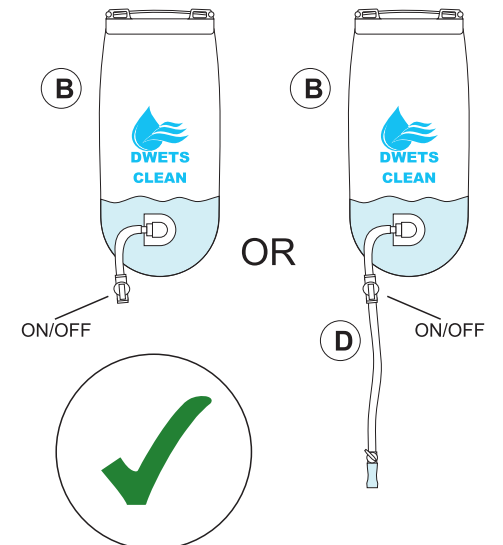
STEP 4

Turn on valves and watch gravity do the work for you!

5 FILTRATION

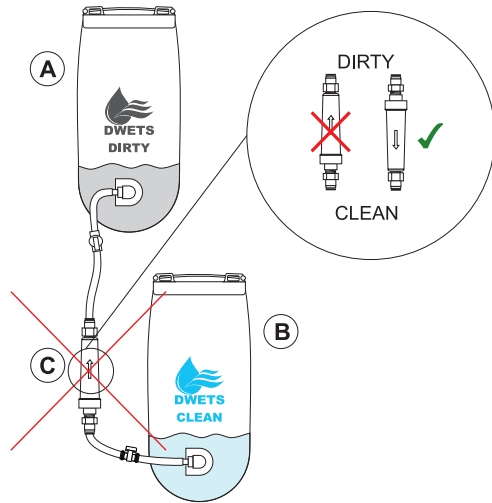


6 TO USE





WARNING



WARNING

Handle Filter Cartridge carefully because a damaged filter cannot prevent exposure to harmful microorganisms. If filter is damaged, discontinue use and replace cartridge

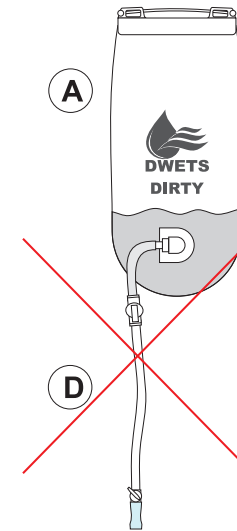
When filtering water, never splash dirty or unfiltered water into clean container to avoid contamination.

Never store Filter Cartridge in cold temperatures (below 30° C) because freezing the filter will damage the filter and compromise the integrity of the filter and filter components. Always wash and dry filter parts.

Disinfect the water reservoirs, hosing, connectors and bite valve thoroughly before long-term storage to prevent the growth of mold, mildew, and bacteria. Never use a dishwasher or microwave to disinfect.



WARNING



WARNING

BIOLOGICAL HAZARD

There are hazards associated with backcountry travel and the use of water filters. Drinking untreated water may expose you to harmful microorganisms and increase your risk of gastrointestinal illness. Using this filter improperly increases your risk of exposure to harmful microorganisms and increases your risk of gastrointestinal illness. Reduce your chances of becoming sick by following the warnings and instructions in this manual and educating yourself on backcountry water safety.



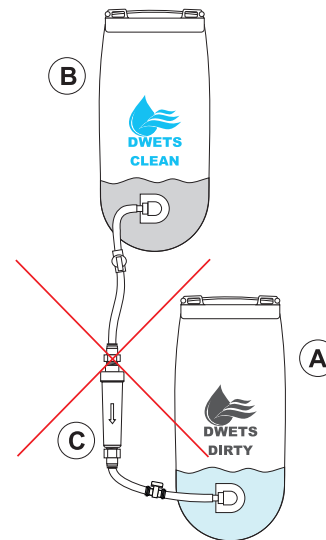
WARNING

YOU ARE RESPONSIBLE FOR YOUR OWN SAFETY AND THE SAFETY OF THOSE IN YOUR GROUP. PLEASE USE GOOD JUDGMENT.

READ, UNDERSTAND, AND FOLLOW ALL instructions and warnings in this manual before using this filter. Failure to follow warnings and instructions may result in gastrointestinal illness.



WARNING



WARNING

Never use DWETS FILTERS to filter seawater or chemically contaminated water, such as water from mining tailing ponds or near large agricultural operations. The DWETS FILTER does not make drinkable water from these sources and does not remove all viruses, chemicals and radioactive materials. Keep the hoses and other potentially contaminated parts away from filtered water to prevent cross contamination.



for more information please visit

www.dwets.com

XI-DWHB